



# Pipe Exposure

Pittsylvania County • Virginia

Pipeline



Exposure



*Synergy With Nature™*



## Pipeline Exposure

**Application:** Submar 4.5" construction mats to cover an upstream exposed 32 inch Natural Gas pipeline and an exposed downstream 36 inch Natural Gas pipeline in a small stream

**Owner:** Colonial Pipeline

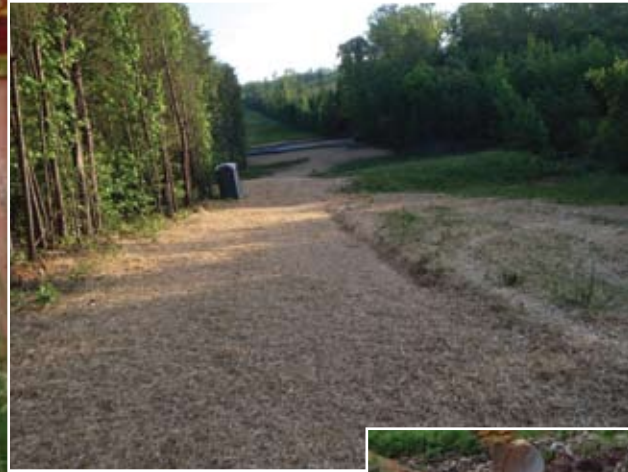
**General Contractor:** Submar

**Location:** Danville, Virginia, Pittsylvania County

**Size:** 27 mats and we had to sandblast and recoat the pipeline with two part epoxy

In a small stream in Danville, VA a 32 inch Natural Gas Pipeline and a 36 inch Natural Gas Pipeline owned and operated by Colonial Pipeline Company had become exposed. The exposure was caused by headcuts which have migrated upstream from the Dan River. The headcuts have exposed the pipelines about 15 feet across the stream. Submar was called in because of several failed attempts to cover and protect the pipeline with rock. The previously placed rock has been continually washed downstream and what material was left provided a perfect base for a very large beaver dam. Submar's solution was to remove the beaver dam, straighten out the flow of the stream over the pipelines and install Submar revetment matting. On this site, a large trench box was utilized as a dam in order to perform pump-around activities which saved time and unnecessary disturbance

of the stream banks. Since the Army Corps of Engineers decided to monitor the site in order to evaluate the performance of Submar's revetment mats, special care was taken with regards to Soil and Erosion Sediment Control. Submar completed the project not only on time but to the complete satisfaction of the Army Corps of Engineers.



805 Dunn Street  
Houma, Louisiana 70360  
985.868.0001  
FAX 985.851.0108  
EMAIL: [submar@submar.com](mailto:submar@submar.com)  
[www.submar.com](http://www.submar.com)